



**DETAIL AND SUBMITTAL SHEET**

DISTRIBUTOR: \_\_\_\_\_ CONTRACTOR: \_\_\_\_\_

MODEL NUMBER: \_\_\_\_\_ PROJECT: \_\_\_\_\_

QUANTITY: \_\_\_\_\_ APPROVED BY: \_\_\_\_\_

ARCHITECT: \_\_\_\_\_ DATE: \_\_\_\_\_

**JL INDUSTRIES  
INCORPORATED**

4450 W. 78th Street Circle  
Bloomington, MN 55435  
Phone: 952-835-6850  
FAX: 952-835-2218

JL WEST COAST 6285 RANDOLPH STREET, COMMERCE, CA 90040 PHONE: 323-726-9070 FAX: 323-726-9068  
JL SOUTH EAST 5758 CORPORATION CIRCLE, FT. MEYERS, FL PHONE: 941-693-7500 FAX: 941-693-7501

**MULTI PURPOSE FLUSH ACCESS PANELS**

**MODEL WB FOR DRYWALL**

The Model WB access door eliminates visual distraction created by projecting, surface-mounted units because it is designed for flush installation in a drywall surface. A special drywall bead covers the outer frame so that drywall cement may be applied to cover and conceal the flange at the same time wallboard joints and corners are being cemented. The access panel has a prime coat which provides an excellent base for finish painting to blend with a wall surfaces.

Model WB door sizes are dimensioned to fit wood stud or steel drywall stud spacings of 12", 14", 16" or 24" on center. The panel also operates on a concealed hinge. The cam lock is operated by standard screwdriver (a key operated cylinder lock can be provided in place of one cam lock).

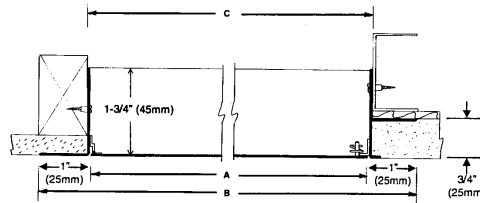
**MODEL PW FOR PLASTERED SURFACES**

Model PW features a 3/4" plasterguard, and is ideal for use in plaster walls or ceilings. Optional PWE includes 3" wide expansion wings of metal lath, at an additional charge. (See options below)

The panel also operates on a concealed hinge. The cam lock is operated by standard screwdriver (a key-operated cylinder lock can be provided in place of one cam lock).

**MODEL WB AND PW  
TOP VIEW**

REFER TO TABLE



**SPECIFICATIONS**

- Materials WB/PW/PWE**  
 Door: 14 gauge steel  
 Frame: 16 gauge steel with 1" flange  
 Finish: Phosphate-dipped steel with prime coat.
- Hinge**  
 Concealed hinge.
- Lock**  
 \_\_\_ Flush screwdriver-operated steel cam standar  
 \_\_\_ Cylinder lock (with 2 keys) is available in place one cam lock (at extra charge). Lock is key-coordinated to fit J.L. Fire Extinguisher cabinet as well. Also available hex head cam.
- Packaging**  
 One panel per carton
- Options**  
 \_\_\_ Stainless steel door panel  
 \_\_\_ Hex head cam

**DOOR SIZES AND WALL OPENINGS: MODEL WB**

• DIMENSIONS IN INCHES • WEIGHT IN POUNDS						
A - MODEL SIZE WIDTH X HEIGHT	B - OUTSIDE FRAME DIMENSIONS		C - WALL OPENING DIMENSIONS		SHIPPING WEIGHT	LATCHES
	WIDTH	HEIGHT	WIDTH	HEIGHT		
___ 8" x 8"	10"	10"	8 1/2"	8 1/2"	4	1
___ 10" x 10"	12"	12"	10 1/2"	10 1/2"	5	1
___ 12" x 12"	14"	14"	12 1/2"	12 1/2"	7	1
___ 14" x 14"	16"	16"	14 1/2"	14 1/2"	8	1
___ 18" x 18"	20"	20"	18 1/2"	18 1/2"	12	1
___ 22" x 22"	24"	24"	22 1/2"	22 1/2"	16	3
___ 22" x 30"	24"	32"	22 1/2"	30 1/2"	21	4
___ 24" x 24"	26"	26"	24 1/2"	24 1/2"	19	3
___ x	___	___	___	___		

SPECIAL SIZES AND SPECIAL MODIFICATIONS CAN BE FABRICATED ON REQUEST.

**DOOR SIZES AND WALL OPENINGS: MODEL PW/PWE**

• DIMENSIONS IN INCHES • WEIGHT IN POUNDS						
A - MODEL SIZE WIDTH X HEIGHT	B - OUTSIDE FRAME DIMENSIONS		C - WALL OPENING DIMENSIONS		SHIPPING WEIGHT	LATCHES
	WIDTH	HEIGHT	WIDTH	HEIGHT		
___ 12" x 12"	14"	14"	12 1/4"	12 1/4"	7	1
___ 16" x 16"	18"	18"	16 1/4"	16 1/4"	10	1
___ 16" x 20"	18"	22"	16 1/4"	20 1/4"	12	1
___ 18" x 18"	20"	20"	18 1/4"	18 1/4"	12	1
___ 24" x 24"	26"	26"	24 1/4"	24 1/4"	19	4
___ x	___	___	___	___		

SPECIAL SIZES AND SPECIAL MODIFICATIONS CAN BE FABRICATED ON REQUEST.



MODEL WB



MODEL PW



MODEL PWE

For information on security access panels: See J.L. Industries Detention Specialties, Sweet's 11190/JLI or call factory.