

# SUBMITTAL: LP-4 SAFETY POST

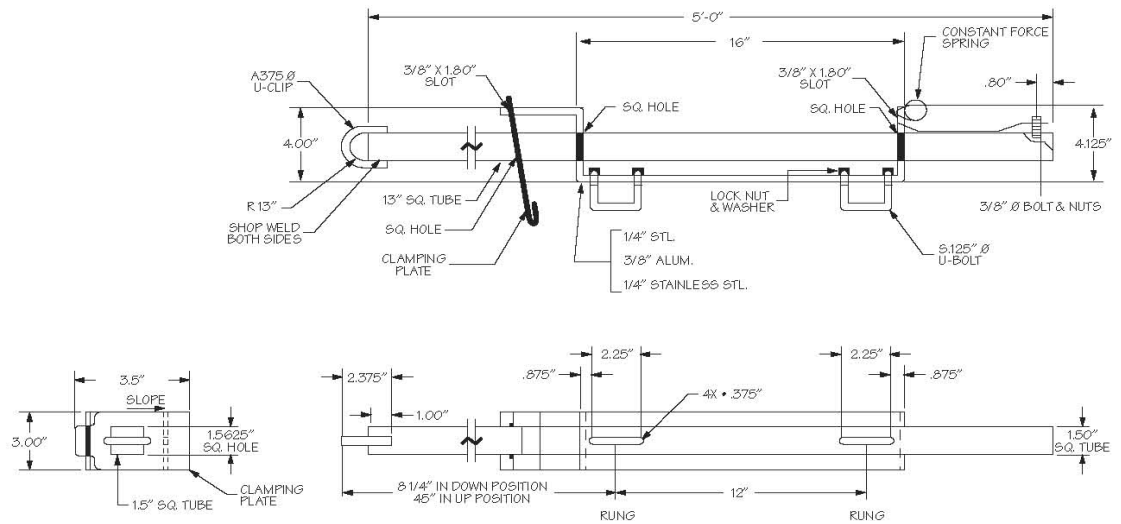
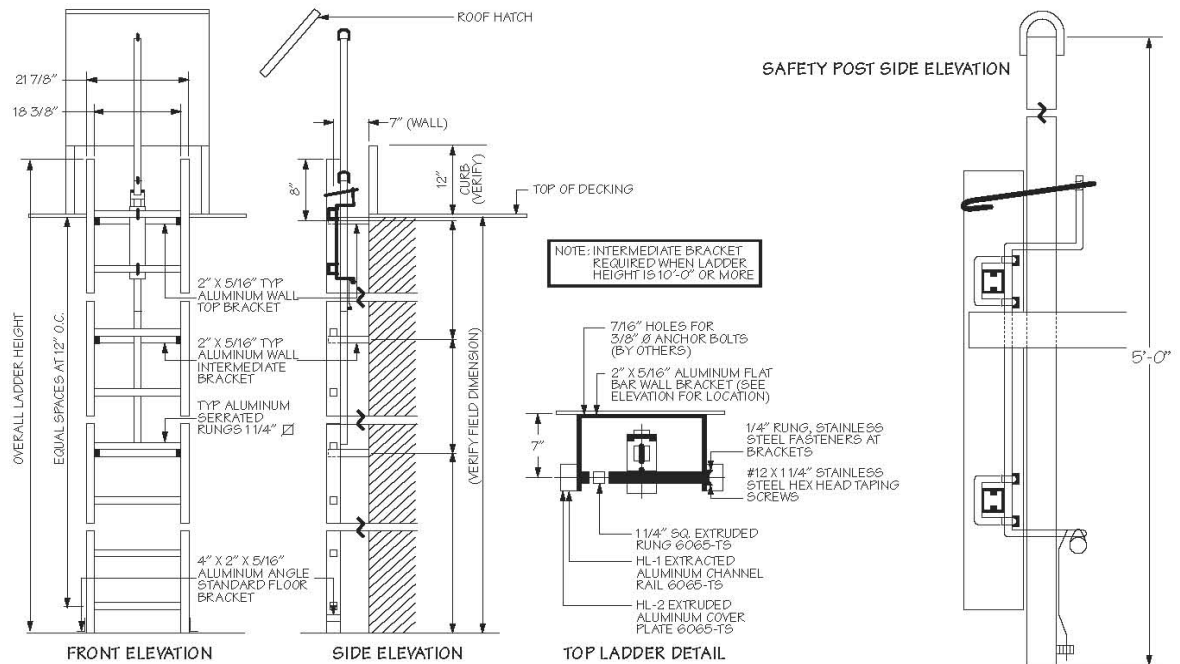
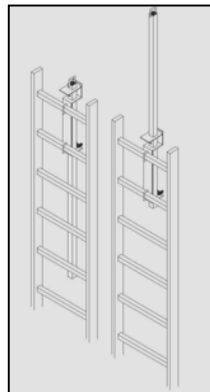
The LP-4 Safety Post provides a convenient and safe method of climbing off and onto fixed access ladders. Meets ANSI A14.3 and OSHA requirements.


**Easy to Install:** The LP-4 Safety Post comes pre-assembled and attaches directly to the top two rungs (square or round) with two U-shaped bolts.

**Easy to Use:** When at the top of the ladder extend the safety post. The spring counter weight makes it easy to lift with just one hand. Step on or off the ladder in a safe standing position while holding onto the post. A latch maintains the post at variable heights and is easily released for retracting the pole.

Safety features include a square post for a no slip grip and a ring at top for a harness. **Weight:** 25 lbs.

**Finish:** Yellow Powder Coat



|   |  |              |              |
|---|--|--------------|--------------|
|  <p><b>JL INDUSTRIES</b></p> | <p>A DIVISION OF</p> <p><b>ACTIVAR</b><br/>INC.</p> <p>Construction Products Group</p> <p>www.activarcpg.com</p> | Distributor: | Quantity:    |
|   |  | Contractor:  | Approved By: |
|   |  | Model #:     | Architect:   |
|   |  | Project:     | Date:        |

HEADQUARTERS: 4450 WEST 78<sup>TH</sup> ST CIRCLE, BLOOMINGTON, MN 55435-5416 PH: 800-554-6077 FAX: 952-835-2218 EMAIL: JL@JLINDUSTRIES.COM WWW.ACTIVARCPG.COM  
 ACPG WEST COAST (SAMSON PRODUCTS): COMMERCE, CA PH: 323-726-9070 FAX: 323-726-9068 • ACPG SOUTHEAST (THOMAS ENTERPRISES): FT MEYERS, FL PH: 239-693-7500 FAX: 239-693-7501